

[MIRAIT ONE SYSTEMS Corporation]**Implements Internet Cloud Support and Zoom Function Enhancement for MIRAI CONNECT® Real-Time Remote Work Support Service Using Wearable Devices on****September 1****Promoting DX of remote work support through the realization of an advanced hands-free environment, and enabling utilization in disaster responses**

MIRAIT ONE SYSTEMS Corporation (head office: Koto-ku, Tokyo; President: Akihiko Tamura; “MIRAIT ONE SYSTEMS”), which is a Group company of Major telecommunications construction company MIRAIT ONE Corporation (head office: Koto-ku, Tokyo; President and Chief Executive Officer: Toshiki Nakayama; “MIRAIT ONE”) will provide the MIRAI CONNECT® high-security real-time remote work support service using wearable devices in a new usage format with Internet cloud support and enhance the zoom function on September 1, 2023.

MIRAI CONNECT® is a service using wearable devices to enable video streaming and the sharing and recording of work site video and bidirectional audio conversations in real time between work sites and remote locations via a high-security video delivery system created by MIRAIT ONE SYSTEMS. The video delivered can be enlarged or adjusted for exposure using browser operations on the viewer side. Providing an advanced hands-free environment with little burden on workers will enable workers to concentrate on the task in front of them and also smooth communication with remote locations.

In order to expand usage options according to customers’ environments, MIRAIT ONE SYSTEMS will commence provision of a new usage format with support for Internet cloud environments in addition to the on-premises environments and closed network environments using a dedicated SIM already supported. Internet cloud support will enable reduction of operations for building communication environments and preparation of viewing terminals.

Furthermore, the video zoom function was also enhanced. Until now, the zoom function displayed the video at the center of the screen at a higher magnification in the same manner as a normal camera, but the new zoom function enables the view to enlarge any part of the image. This will enable smoother communication with workers because the viewer side can freely specify and expand the area they want to focus upon.

can be used in all industries and business categories such as remote support and construction work records in general construction such as telecommunications construction work, the preparation of technical skill succession videos, sharing and taking surgery video in hospitals, and remote support for in-home treatment and nursing. Furthermore, it can be utilized not only in construction and healthcare, but also for disaster support such as remotely determining on-site conditions when a disaster occurs.

Through the provision of MIRAI CONNECT®, MIRAIT ONE SYSTEMS will assist DX of work support for many customers, , such as increasing the speed of communication of information through real-time sharing of video and audio, enhancement of work efficiency by utilizing data shared in real time, and strengthening of security measures.

An overview of MIRAI CONNECT® is provided in the attachment.

< About MIRAIT ONE Corporation >

MIRAIT ONE Corporation was launched on July 1, 2022 through the integration of MIRAIT Holdings Corporation, MIRAIT Corporation, and MIRAIT Technologies Corporation. MIRAIT ONE has established “co-creating an exciting future through challenges and technology” as its purpose (significance of existence), and is engaged in the resolution of issues faced by customers and society and regional revitalization by promoting initiatives such as urban development and regional development, corporate DX and GX, green business and global business based on the technical capability cultivated until now in telecommunications facility construction and the civil engineering business.

< About MIRAIT ONE SYSTEMS >

MIRAIT ONE SYSTEMS was reorganized as MIRAIT ONE’s strategic system integration subsidiary on July 1, 2022 with the aim of further expanding the business domain and increasing profitability of the system integration business in the MIRAIT ONE Group by providing more flexibility and to enabling the enhancement of Group synergies. The company will work with the desire to continue to embrace challenges as a group providing advanced system technology capabilities befitting of the strategic system integration subsidiary of the MIRAIT ONE operating and holding company.

<Overview of MIRAI CONNECT®>

About MIRAI CONNECT®

MIRAI CONNECT® is a service using wearable devices to enable video delivery and the sharing and recording of bidirectional audio conversations in real time between work sites and remote locations via a high-security video and audio transmission system created by MIRAIT ONE SYSTEMS. The video delivered can be enlarged or adjusted for exposure using browser operations on the viewer side. This will provide an advanced hands-free environment with little burden on workers, enabling workers to concentrate on the task in front of them.

Feature 1: High operability and advanced hands-free environment (an accessible UI prioritizing on-site use)

- Video can be streamed at the push of a button. It offers easy operability for anyone through simple operation.
- Zooming, exposure adjustment and recording operations of wearable device cameras can be performed from remote locations via a browser.
Video of work can be shared and recorded in real time without interrupting the work of workers. This enables smooth communication between the worker and the viewer side.
- Any part of the image can be enlarged from the viewer side, and even the edges of the screen can be enlarged.

Feature 2: Three usage formats according to the customer's security level

- Internet cloud version * Commencing provision on September 1
Can be used via Internet access.
It is optimal for use from anywhere without restrictions on the usage environment.
Typical use cases: [Construction] Utilization on site such as construction site tours and facility inspections
[Disasters] Utilization to ascertain on-site conditions from a remote site in the event of a disaster
- On-premises version
Can be used by installing a WebRTC server on the customer's premises, and a Wi-Fi communication environment.
It is optimal for use in environments requiring high security and environments that cannot be connected to the Internet.
Typical use cases: [Healthcare] Utilization in sites handling personal information such as surgery and medical examinations, and outdoors such as emergency medical treatment
- Secure cloud (LTE closed network) version
Can be used in a highly secure communications environment through a 4G/LTE closed network using a dedicated SIM card. It is optimal for use through secure communication

from anywhere without limiting the usage location.

Typical use cases: [Factory] Utilization in highly confidential product factories, can also be built on existing closed networks

Overview of THINKLET®* wearable device

THINKLET® is a registered trademark and product name of Fairy Devices Inc.

MIRAI CONNECT® is able to use the THINKLET® neck-mounted wearable device.



- A lightweight neck-mounted device designed based on ergonomics providing hands-free operation.

- Equipped with a wide-angle camera. “Blurring” of images can be reduced and stable images can be obtained due to being neck mounted.

- Equipped with a high-performance microphone. The audio is clear and easy

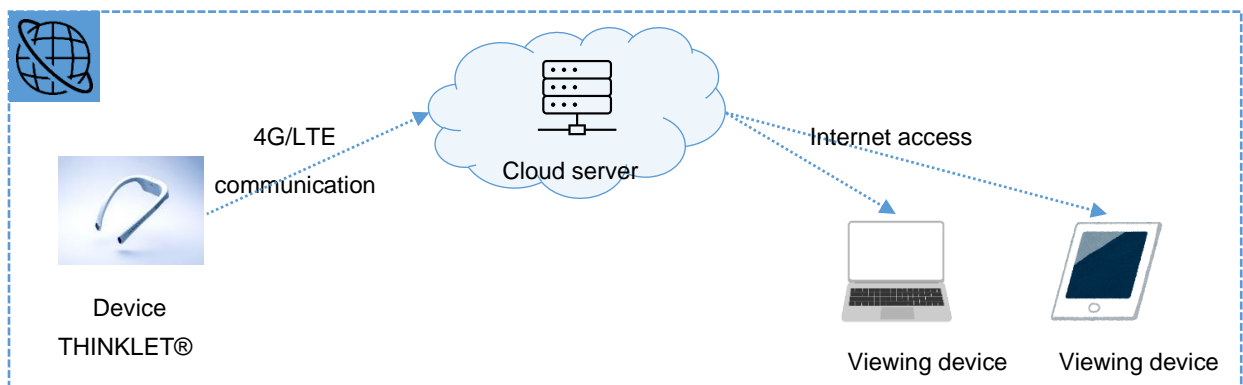
to hear.

- Water resistance and dust resistance equivalent to IP54, enabling use outdoors.

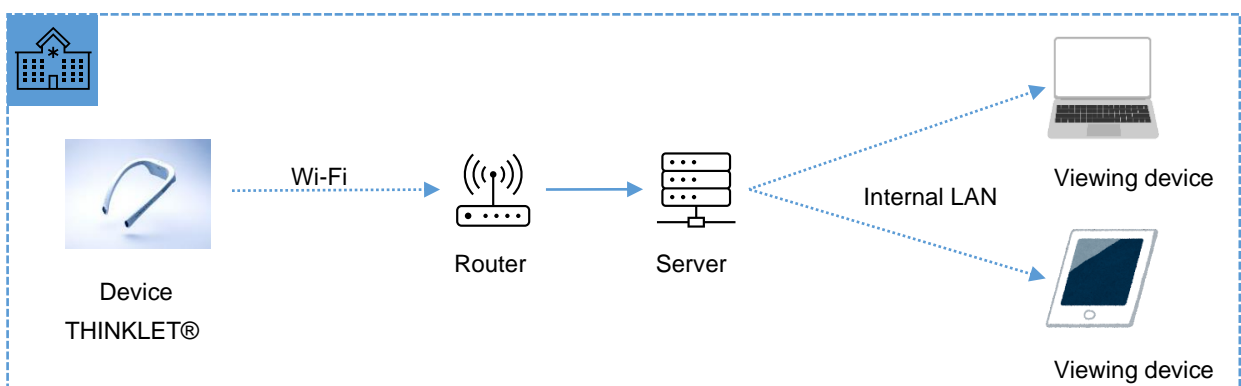
© 2022 Fairy Devices Inc.

Image of service provision (usage formats)

Internet cloud version



On-premises version



Secure cloud (LTE closed network) version

